

ITATECH

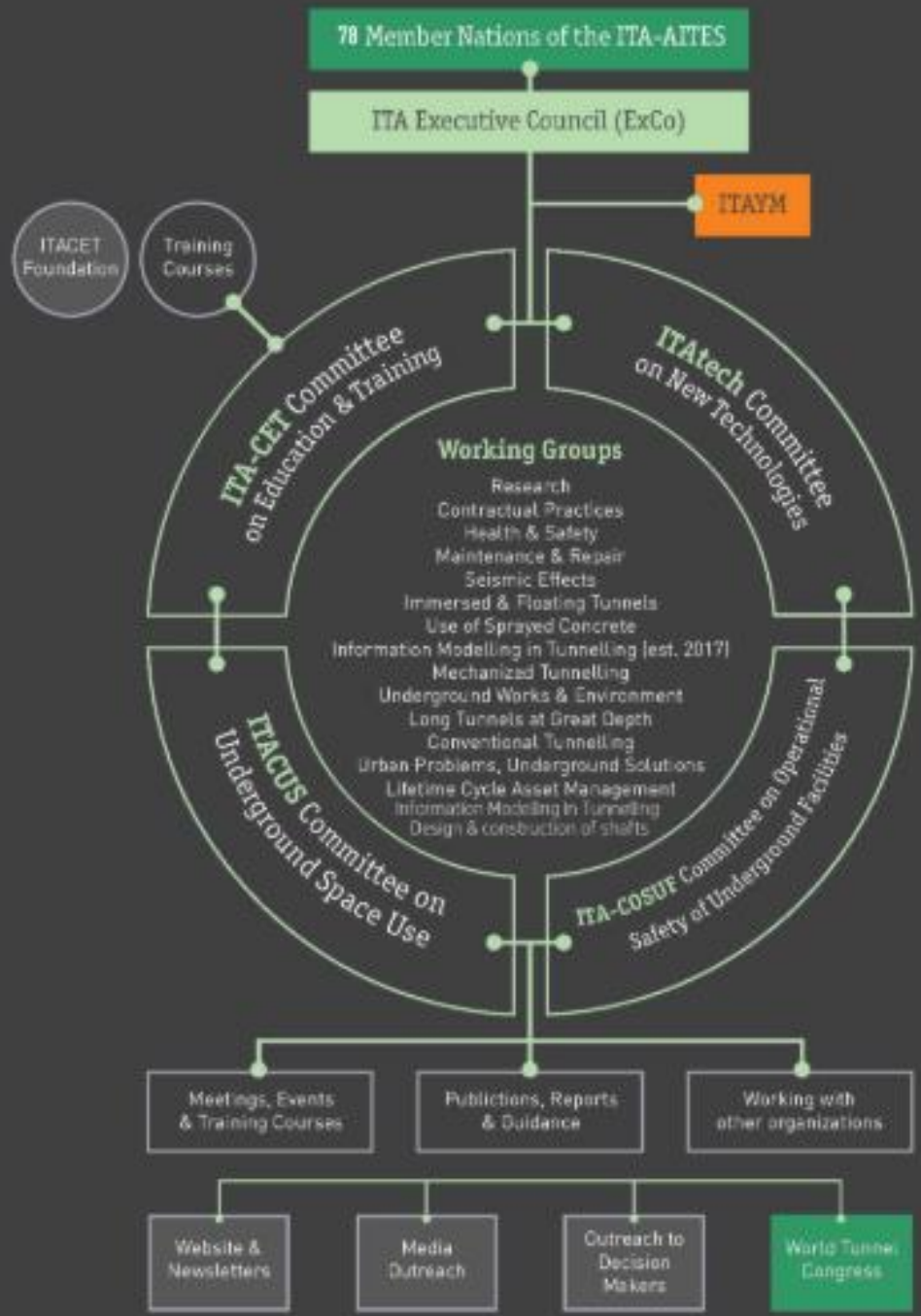


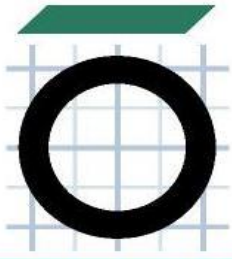
ASSOCIATION
INTERNATIONALE DES TUNNELS
ET DE L'ESPACE SOUTERRAIN

AITES

ITA

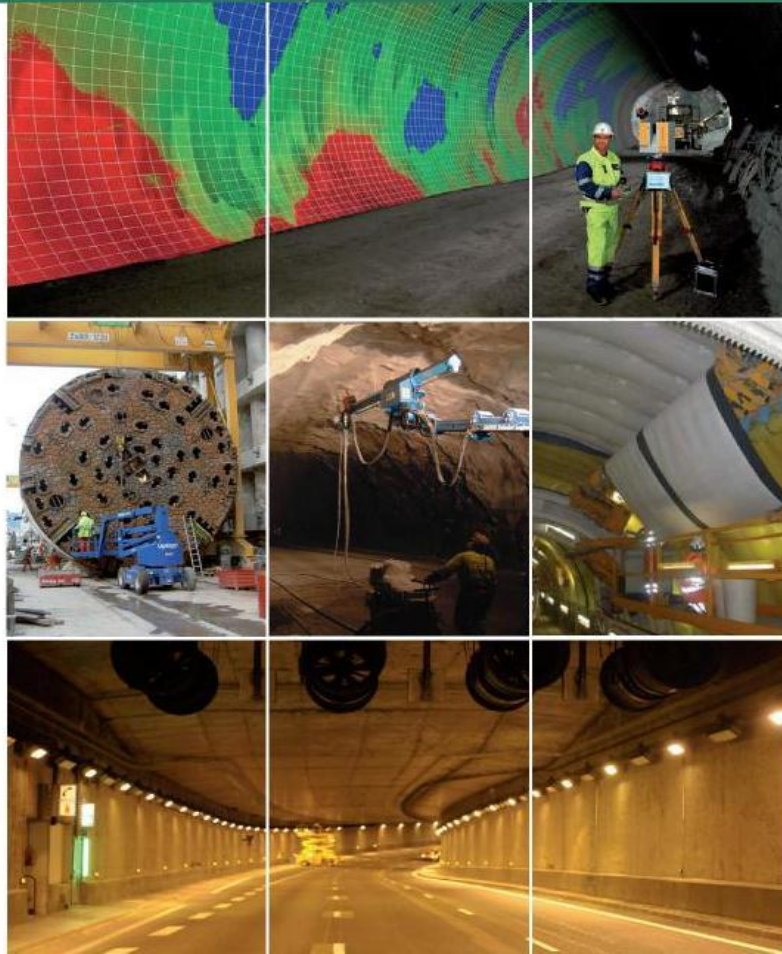
INTERNATIONAL TUNNELLING
AND UNDERGROUND SPACE
ASSOCIATION





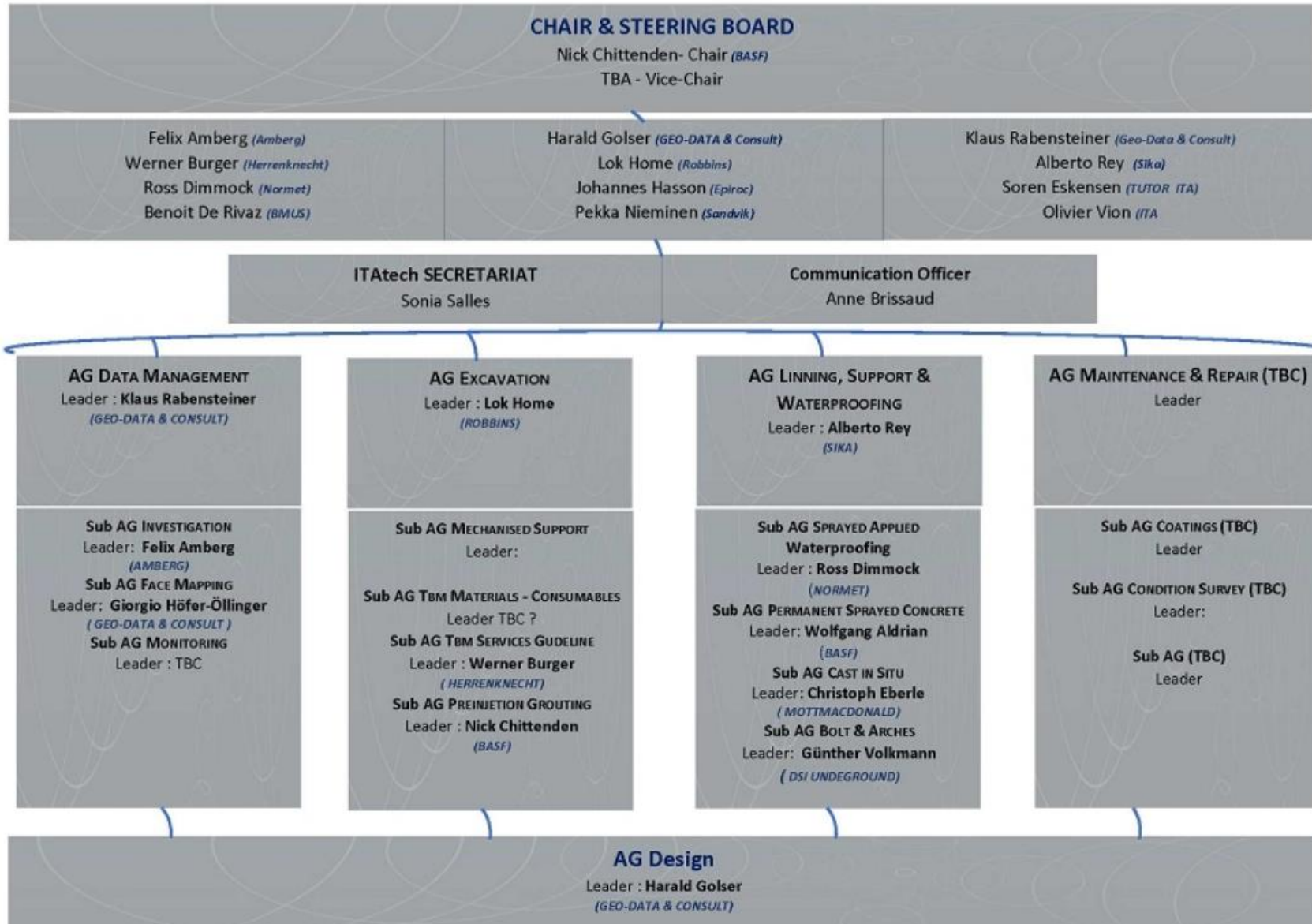
ITAttech

INTERNATIONAL TUNNELLING AND UNDERGROUND SPACE ASSOCIATION

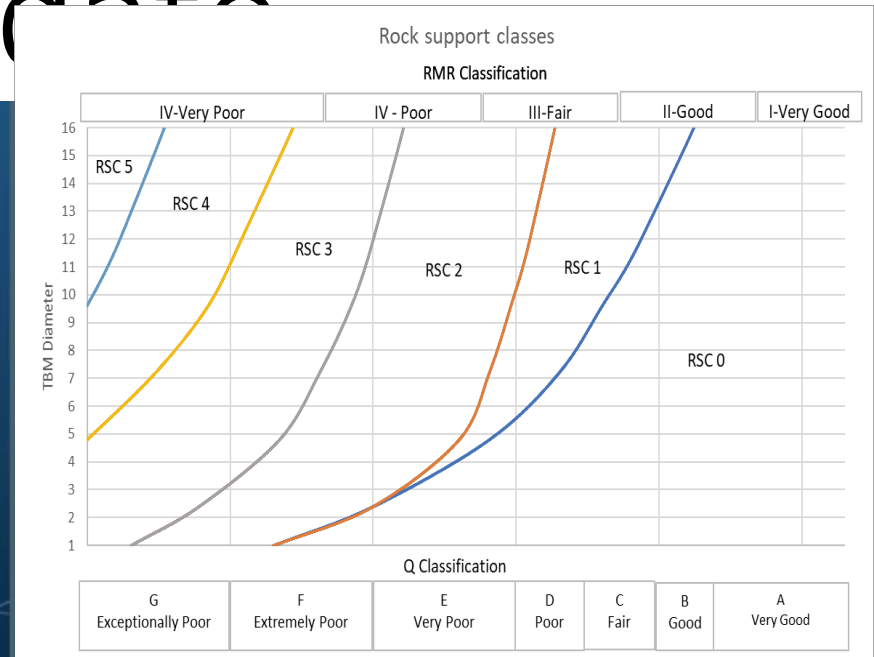
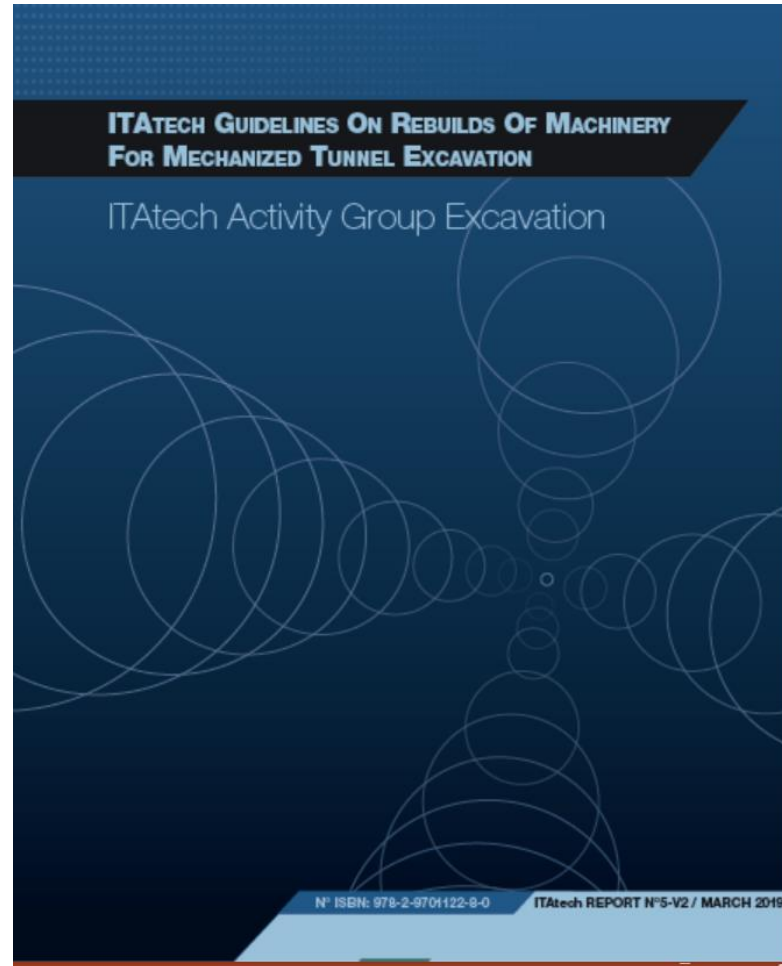


The goal of this committee is to provide a platform for engineers, manufacturers, contractors and suppliers to draw on experience and expertise together for the benefit of the whole industry, and to find ways to of supporting the introduction of new techniques and products by collaborating on the development aof design and performance criteria and preparing application of best-practice guidelines.

The ITAttech activity groups include all processes related to underground construction such as Investigation, Excavation, Support, Lining and Waterproofing, Installation and Interior works, Monitoring, Rehabilitation, Design.



Publications to date

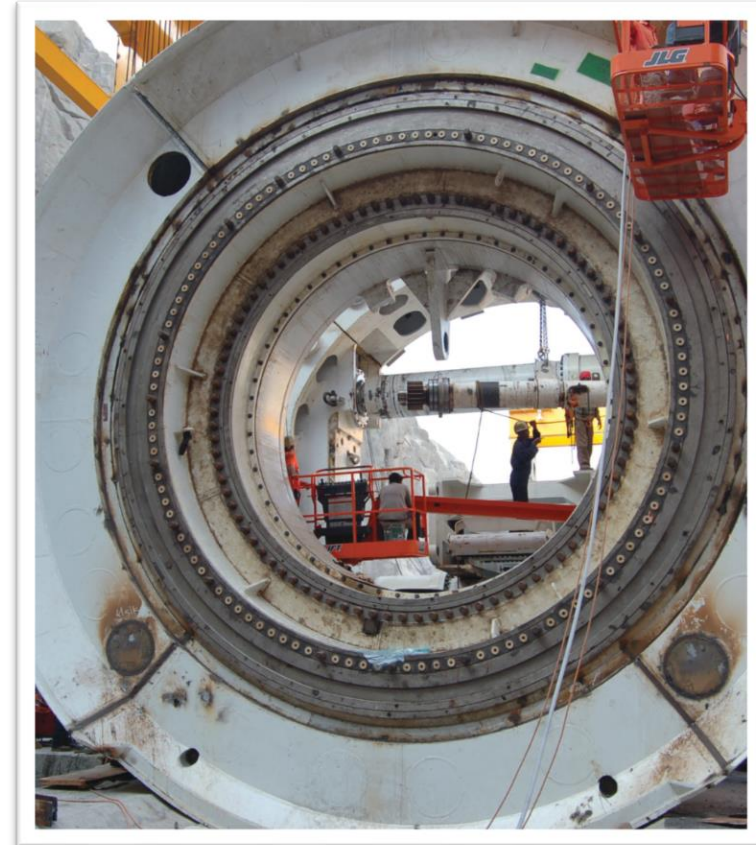


Best Practices for Segment Backfilling

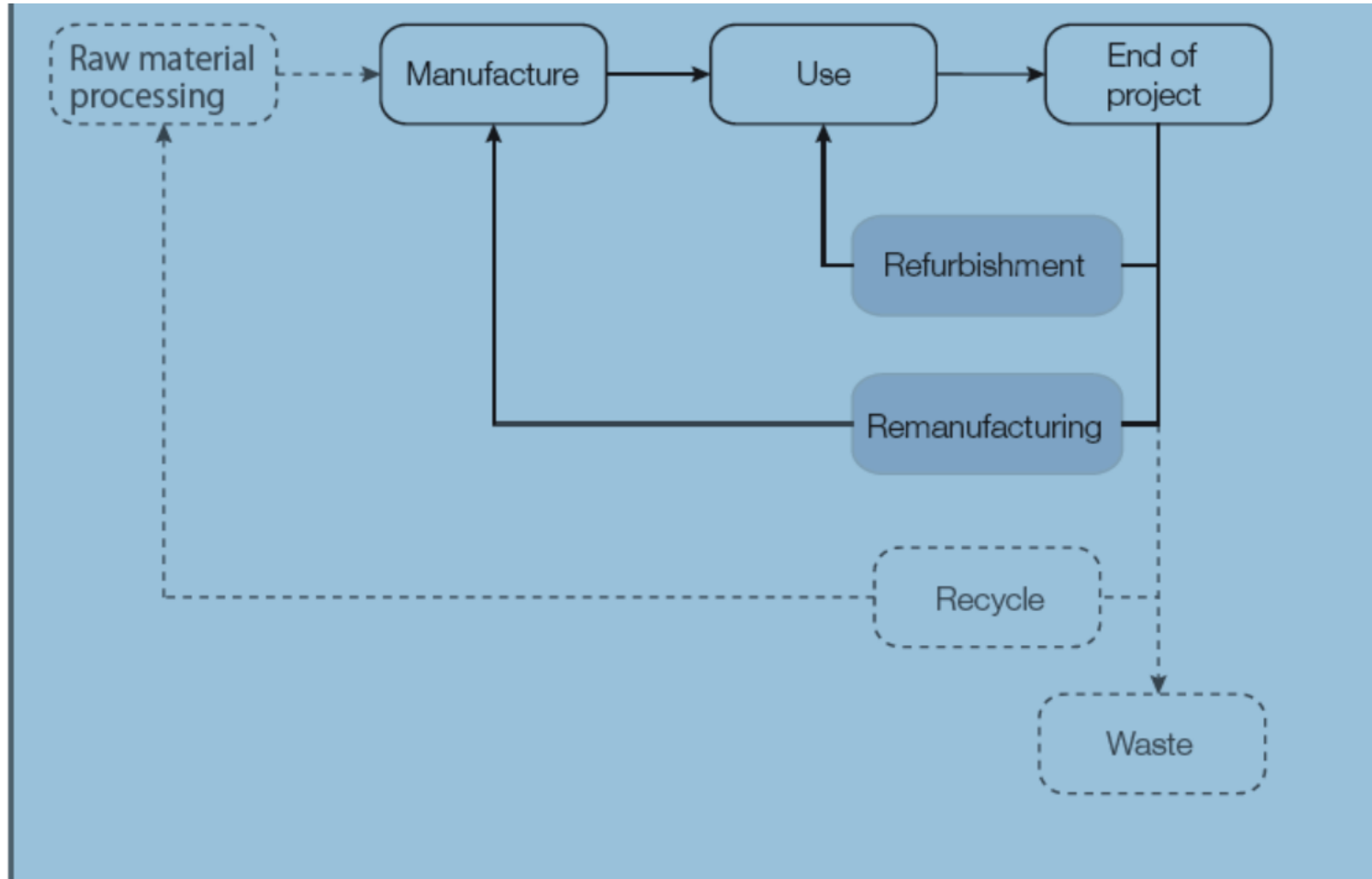
THE RATING LIFE (L_{10}) EQUATION

$$L_{10} = (C/P)^k$$

- L_{10} : rating life in [10^6 revolutions]
- C: dynamic load bearing capacity of the bearing in [kN]
- P: applied load in [kN]
- K: for roller bearings = 10/3



New and refurbished

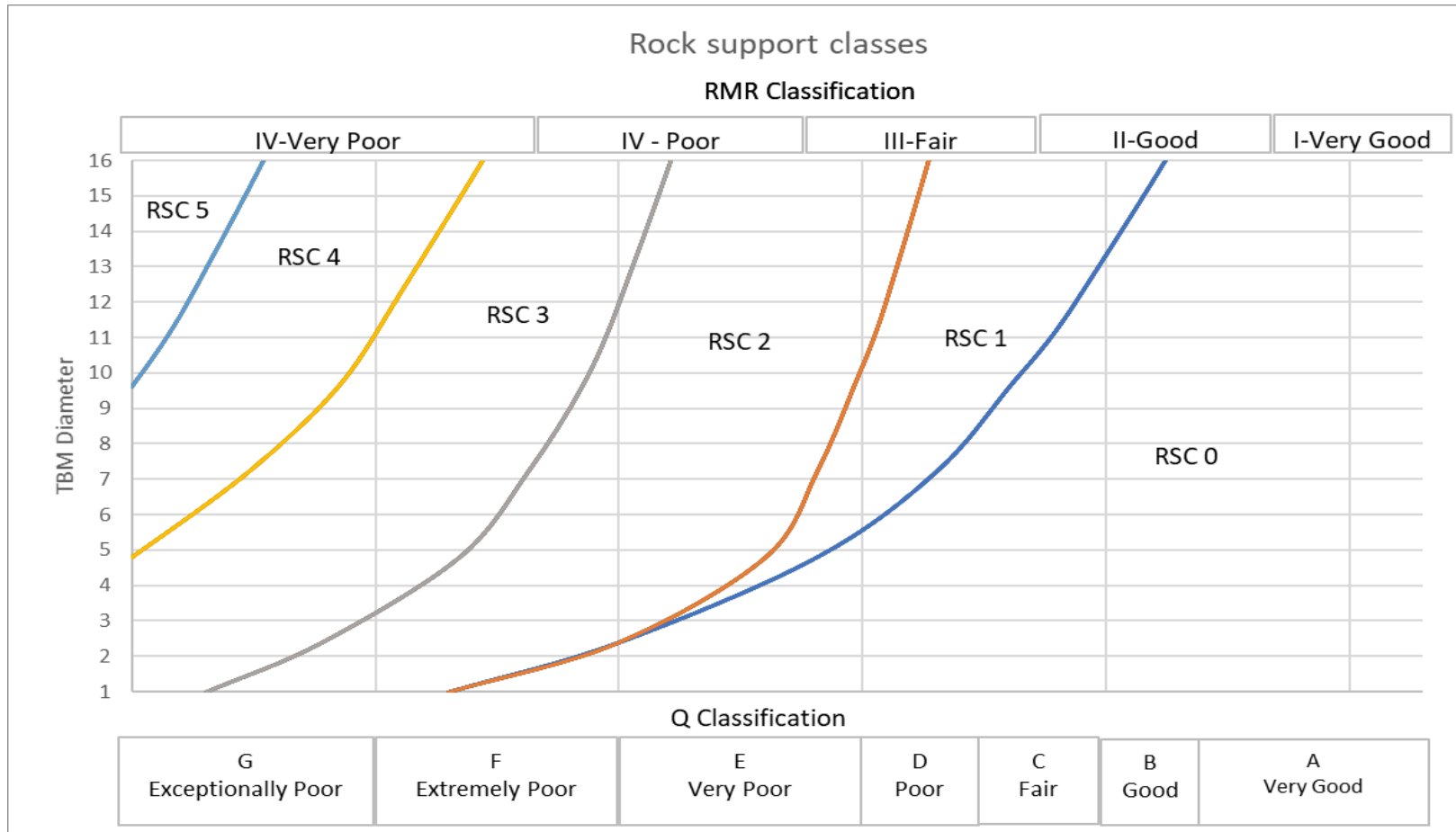


Participants

Engineers from multiple companies, totaling over a dozen participants, worked on the guidelines document. These include:

- BASF
- Herrenknecht
- McNally Construction
- Obayashi
- Robbins
- Independent Consultants

Rock support for TBM tunnel



ITATECH BENEFITS

Improved information exchange on technologies and development between suppliers, contractors and consultants.

One voice policy for the underground industry; clarity for stakeholders

A best practice source for designers and specifying engineers.

Fast and secure technology transfer into the market

BE PART OF THE DEVELOPMENT OF NEW TECHNOLOGIES. JOIN ITATECH

For more information, visit ITA website at www.ita-aites.org